

Kerr County 4-H 2023 Major Stock Show Season Program

Fort Worth Stock Show & Rodeo
January 13- February 4, 2023
www.fwssr.com

Hill District Grandstand Show
January 15th - January 21st, 2023
thegrandstand21.wixsite.com/2021

Texas' Elite Showcase
February 10th - 12th, 2023
texaseliteshowcase.com/

San Antonio Stock Show & Rodeo
February 9th – February 26th, 2023
sarodeo.com

San Angelo Stock Show & Rodeo
February 2nd – February 19th, 2023
sanangelorodeo.com

Houston Livestock Show & Rodeo
February 28th - March 19th, 2023
rodeohouston.com

Rodeo Austin
March 10th – March 25th, 2023
rodeoaustin.com

This booklet is provided only as a tool to assist you in planning for the major stock shows. Exhibitors are encouraged to use the websites listed to confirm any information concerning the major shows.

2023 Kerr County Livestock Show

Breeding Sheep	Arrive	11 am - 3 pm Wednesday, January 4th
	Check-In	11 am - 4 pm Wednesday, January 4th
	Show	1 pm Thursday, January 5th (or following completion of the goat show, whichever is later)
Lambs	Arrive	11 am - 3 pm Wednesday, January 4th
	Weigh-In	4 pm Wednesday, January 4th
	Show	8 am Thursday, January 5th
Goats	Arrive	11 am - 3 pm Wednesday, January 4th
	Check-In	11 am - 4 pm Wednesday, January 4th
	Show	10:30 am Thursday, January 5th (or following the completion of the lamb show, whichever is later)
Barrows	Arrive	2-5 pm Thursday, January 5th
	Check-In	2-6 pm Thursday, January 5th
	Show	9 am Friday, January 6th
Heifers	Arrive	2-5 pm Thursday, January 5th
	Check-In	5 pm Thursday, January 5th
	Show	30 minutes after the completion of the steer show
Steers	Arrive	2-5 pm Thursday, January 5th
	Weigh-In	5 pm Thursday, January 5th
	Show	9 am Friday, January 6th
Breeding Gilts: (Cross & Purebred)	Arrive:	2-5 pm Thursday, January 5th
	Check-In:	2-6 pm Thursday, January 5th
	Show:	30 minutes after the completion of the barrow show
Auction		1 pm Saturday, January 7th

Steers: May enter (2) per breed and no more than (6) per department. Steers must weigh 950 lbs. **Judge:** TBD

Lambs: May enter (2) per breed but no more than (6) per department. 100 lb minimum. 160 lb. maximum. Southdowns and Dorpers will be 85 lbs.

Judge: Chad Coburn

Market Swine: May enter (2) per breed but no more than (6) per department. 190 lb. minimum. 280 lb. maximum. 10 lb. weigh back. Gilts and barrows will be eligible to show. Gilts may not double enter in the market and breeding show.

Judge: Kent Bennigton

Meat Goat: May enter (4) entries but no more than (2) per class. 65 lb. minimum. 115 lb. maximum. 4 lb. weigh back. Goats must be dehorned or disbudded. Any scurs longer than one inch will be disqualified. Goats must be evenly slick shorn of uniform length from the knees and hocks up. Hair over 3/8" will be sifted. **Judge:** Chad Coburn

Heifer: May enter (2) per breed but no more than (6) per department. Must be state validated. Will be divided by British, American and European divisions. Must present original registration papers at check-in. Registration papers must be in the name of the exhibitor by November 1st. **Judge:** TBD

Breeding Sheep: May enter (2) per class. Must be state validated. Original registration papers must be available at all times. Registration papers must be in the name of the owner or owners name by October 1, 2022. **Judge:** Roy Walston

Registered Breeding Swine: May enter (3) per breed but no more than (6) per department. Gilts must be farrowed between July 1 and September 10, 2022. Must be state validated. Original registration papers must be presented at check-in. A gilt can only enter the Registered or the Non-pedigreed division, but not both. Gilts may not double enter in the market & breeding show.

Judge: Kent Bennington

Non-Pedigreed Breeding Swine: Limited to (4) entries. Must be state validated. Minimum 190 lb. No maximum. 15 lb. weigh back. A gilt can only enter the Registered or the Non-pedigreed division, but not both. Gilts may not double enter in the market & breeding show. **Judge:** Kent Bennington

Kerr County Weight Breaks

Swine	2022 - County	2021 - County
Duroc	190-208 209-229 230-280	220-237 238-257 258-280
Hampshire	190-209 210-232 233-280	220-228 229-247 248-280
Yorkshire	190-236 237-280	220-230 231-256 257-280
Dark OPB	190-219 220-280	220-238 239-280
Light OPB	190-235 236-280	220-238 239-280
Crossbred	190-194 195-209 210-221 222-234 235-249 250-280	220-225 226-244 245-258 259-272 273-280
Non-Pedigreed Gilts	190-200 201-225 226-295	200-218 219-250 251-298

Goats	2022 - County	2021 - County
	65-69 70-76 77-80 81-81 82-87 88-90 91-93 94-101 102-115	60-71 72-77 78-82 83-88 89-90 91-95 96-99 100-104 105-114

Lamb	2022 - County	2021 - County
Southdown	85-106 107-114 115-140	97-122 123-154
Finewool	100-117 118-129 130-145	100-107 108-132 133-148
Finewool Cross	100-123 124-136 137-159	100-127 128-140 141-155
Medium Wool	100-122 123-132 133-149 150-157	100-131 132-143 144-154 155-160

Steers	2022 - County	2021 - County
British	950-1164 1165-1312	900-1291 1292-1391
American	950-1218 1219-1373	900-1142 1143-1428
European	950-1155 1156-1235 1236-1338	900-1158 1159-1242 1243-1313

Hill District Grandstand Show

Breeding Gilts: (Cross & Purebred)	Arrive: 9 am - 3 pm Thursday, January 19th Check-In: 9 am - 4 pm Thursday, January 19th Show: 8 am Friday, January 20th
Breeding Sheep	Arrive 4-9 pm Wednesday, January 18th 8 am - 12 pm Thursday, January 19th Check-In 8 am - 12:30 pm Thursday, January 19th Show 1 pm Thursday, January 19th
Lambs	Arrive 9 am - 3 pm Sunday, January 15th Check-In 9 am - 4 pm Sunday, January 15th Show 8 am, Monday, January 16th
Goats	Arrive 6-9 pm Tuesday, January 17th 6-9 am Wednesday, January 18th Check-In 6-9 am Wednesday, January 18th Show 11 am Wednesday, January 18th
Barrows	Arrive 9 am - 3 pm Monday, January 16th Check-In 9 am - 4 pm Monday, January 16th Show 8 am Tuesday, January 17th
Heifers	Arrive 9 am - 3 pm Wednesday, January 18th Check-In 9 am - 4 pm Wednesday, January 18th Show 8 am Thursday, January 19th
Steers	Arrive 9 am - 3 pm Wednesday, January 18th Check-In 9 am - 4 pm Wednesday, January 18th Classification 4:30 pm Wednesday, January 18th Show following completion of the Heifer Show
Auction	1 pm Saturday, January 21st

Entry Info - Fee: \$35.00 Deadline: December 1st

Lambs - John L. Kuykendall Arena & Event Center (Llano, TX) May enter 2 wether lambs. 100 lb minimum, no maximum weight, 90 lb minimum for Southdowns & Dorpers. 5 lb weigh-back. **Judge:** Jake Warntjes

Goats - John L. Kuykendall Arena & Event Center (Llano, TX) May enter 2 wether goats. 65 lb minimum, 115 lb maximum. 4 lb weigh-back. Goats with hair over 3/8" will be sifted. Horns must be tipped with the remaining surface area of the horn diameter greater than a dime. 15 classes will be set at the discretion of the superintendents. **Judge:** Scott Greiner

Barrows - Hill Country Youth Event Center (Kerrville, TX) May enter 2 market barrows. 230 lb minimum, 290 lb maximum. 10 lb weight back. **Judge:** Justin Rodibaugh

Steers - Kendall County Youth Agriculture & Equestrian Center (Comfort, TX) May enter 2 per exhibitor. 950 lb minimum, no max. Steers weighing greater than or less then 5% of the weigh-in weight will be disqualified. This is a "Blow and Go" Show. **Judge:** Carter Ward

Heifers - Kendall County Youth Agriculture & Equestrian Center (Comfort, TX) May enter 2 heifers per breed (American, British, European). Must show ownership on or before November 1, 2022. **Judge:** Carter Ward

Breeding Sheep - Gillespie County Fairgrounds (Fredericksburg, TX) May enter 2 per class. **Judge:** Will Dickson

Breeding Swine - Hill Country Youth Event Center (Kerrville, TX) Limited to 6 entries total with no more than 3 per breed. Must have been farrowed between July 1, 2022 & September 10, 2022. Must show ownership on or before December 1, 2022. Entries can not be dual entered in the Non-pedigreed Swine Show. Gilts are not eligible for the auction. **Judge:** Blane Olson

Non-pedigreed breeding swine - Hill Country Youth Event Center (Kerrville) Limited to 3 entries. 210 lb. minimum, no max. A total of 6 crossbred gilt classes will be set at the discretion of the superintendents based upon weight. 15 lb. weigh-back. Entries can not be dual entered in the Registered Swine Show. Gilts are not eligible for the auction. **Judge:** Blane Olson

Eligibility for Sale:

Market Steers: 1st place in each class (Total 13 hd)

Market Goats: 1st - 3rd place in each class (Total 45 hd)

Market Barrows: 1st - 3rd place in each class (Total 54 hd)

Market Lambs: 1st - 3rd place in each class (FW, FWX, SD, MW Classes, 1-2nd place Dorper (Total 49 hd)

Grandstand Weight Breaks

Swine	2022 - Grandstand	2021 - Grandstand
Duroc	230 231-245 246-262 263-290	220-240 241-259 260-280
Hampshire	230-233 234-247 248-290	220-229 230-249 250-280
Yorkshire	230-251 252-290	220-245 246-280
Dark OPB	230-231 232-270	220-230 231-248 250-280
Light OPB	230-242 243-290	220-243 244-280
Crossbred	230 231-239 240-249 250-260 261-290	220 221-231 232-242 243-259 260-280
Non-Pedigreed Gilts		200-207 208-229 230-239 240-253 254-271 272-340

Goats	2022 - Grandstand	2021 - Grandstand
	65-67 68-73 74-76 77-78 79-81 82-83 84-86 87-89 90-91 92-93 94-98 99-100 101-104 105-108 110-115	60-68 69-73 74-76 77-79 80-82 83-84 85-87 88-90 91-92 93-95 96-97 98-100 101-105 106-108 109-115

Lamb	2022 - Grandstand	2021 - Grandstand
Southdown	94-111 112-121 122-132 133-158	94-116 117-126 127-153
Finewool	115-127 128-141 142-160	105-124 125-132 133-139 140-154
Finewool Cross	114-126 127-134 135-141 142-159	109-128 129-130 131-141 142-167
Medium Wool	100-129 130-139 140-151 152-180	100-130 131-143 144-152 153-179
Dorper	91-119 120-145	

Steers	2022 - Grandstand	2021 - Grandstand
British	950-1120 1121-1249 1250-1435	1040-1114 1115-1211 1212-1285 1286-1398
American	950-1090 1091-1189 1190-1420	960-1199 1200-1300 1301-1485
European	980-1047 1048-1135 1136-1190 1191-1245 1246-1280 1281-1330 1331-1489	950-1039 1040-1155 1156-1235 1236-1315 1316-1379 1380-1450

**THIS THING IS FORT WORTH STOCK SHOW & RODEO
LEGENDARY**

- Barrows:** Arrive 1:00pm—7:00pm Monday, January 30th
 Show 9:00am Wednesday, February 1st
 9:00am Thursday, February 2nd
 Release Terminal
- Breeding Sheep:** Arrive 8:00am Wednesday, Jan 25th through 4:00pm Thursday, Jan 26th
 Show 8:00am Sunday January 29th
 Release 12 noon Sunday, January 29th
- Steers:** Arrive 7:00am—6:00pm Tuesday, January 31st
 Show 8:00am Thursday, February 2nd
 8:00am Friday, February 3rd
 Release 6:00 am Friday, February 3rd
- Heifers:** Arrive 8:00am Thursday, Jan 19th through 9:00am Friday, Jan 20th
 Show: Check Catalog for Breed & Show times
 Release: 6:00 am, Monday, January 23rd
- Lambs:** Arrive 10:00am - 6:00pm Friday, January 20th
 Show 8:00am Sunday, January 22nd
 8:00am Monday, January 23rd
 Release 6:00 am Monday, January 23rd
- Goats:** Arrive 10:00am—6:00pm Friday, January 20th
 Show 10:00am Sunday, January 22nd
 10:00am Monday, January 23rd
 Release 6:00 am Monday, January 23rd
- Auction:** Junior Sale of Champions 9:00 am, Saturday, February 4th

Lambs: Exhibitors may enter 8 wether lambs, but no more than 2 allowed in each weight class. 90 lbs. Minimum weight, southdowns & dorpers 80 lbs. minimum, no maximum. 5lbs. weigh-back. **No tooth rule.** All lambs must be shorn to the skin with mechanical shears one week or less prior to arrival. **All champions and reserve champions must sell!**

Goats: Exhibitors may enter only 1 wether goat. All goats must be shorn to the skin with uniform clip above the knee & hock joint. Minimum weight 50 lbs. 4 lb weigh back. Goats will be divided into 12 classes. **All weight Division Champions & Reserve Champions will sell!**

Barrows: Exhibitors may enter only 1 barrow. 250 lbs. minimum, 290 lbs. maximum. 10 lb. tolerance allowed. All champions and reserve champions will sell. **Terminal Show.**

Steers: Exhibitors may enter only 1 steer. Must have owned the steer prior to July 1st, 2022. Minimum weight 1000 lbs. **The first, second, and any other steer designated at the discretion of the Show management will be reweighed. Any steer weighing more than 105 percent of its official weight will be disqualified.**
Fans are NOT Allowed!!!!

Heifers: "Each exhibitor is entitled to enter one heifer. A copy of the original Registration Certificate must be submitted with Junior Heifer entries. Exhibitors are required to bring original registration papers to the showring while exhibiting the heifer. "Animals entered in this department must meet the respective breed association requirements and must be registered in the records of their respective breed association in the name of the exhibitor on or before November 1, 2022. Heifers must be validated with the Texas Heifer Validation Program."

Breeding Sheep: Exhibitors may show 2 animals in each of the single classes, but will be restricted to only 1 entry in each group class. To be eligible for a group class, the animals must be entered and shown in a single class. Animals must be registered in the name of the exhibitor and must have been owned by the exhibitor prior to November 1, 2022, as evidence by the date of transfer to the breed association.

Passes: 1 complimentary pass per exhibitor. Additional passes \$35.00 each. Parking permits are \$60.00 each.

Range & Pasture Plant ID Contest
Horse Judging Contest

Saturday, January 21st
Tuesday, January 17th

FORT WORTH WEIGHT BREAKS

STEER	2022	2021	2020	2019
ANGUS	1000-1150 1151-1245 1246-1618	COVID-19	1000-1118 1119-1246 1247-1495	900-1109 1100-1258 1259-1467
HEREFORD	1000-1149 1150-1253 1254-1525	COVID-19	1000-1178 1179-1253 1254-1495	900-1207 1208-1255 1256-1470
P HEREFORD	1000-1148 1149-1263 1264-1475	COVID-19	1020-1163 1164-1275 1276-1498	900-1177 1178-1333 1334-1535
SHORTHORN	1000-1150 1151-1280 1281-1478	COVID-19	1000-1079 1080-1208 1209-1420	900-1076 1077-1210 1211-1540
ABC	1000-1099 1100-1325 1326-1576	COVID-19	1000-1107 1108-1225 1226-1496	900-1116 1117-1229 1230-1485
EXOTICS	1000 1001-1041 1042-1077 1078-1121 1122-1145 1146-1183 1184-1209 1210-1243 1244-1299 1300-1350 1351-1453 1454-1875	COVID-19	1000 1000 1001-1045 1046-1069 1070-1107 1108-1150 1151-1190 1191-1214 1215-1250 1251-1319 1320-1436 1437-1675	900-974 975-1019 1020-1048 1049-1074 1075-1115 1116-1149 1150-1175 1176-1212 1213-1251 1252-1323 1324-1434 1435-1585

GOAT	2022	2021	2020	2019
	65-69 70-74 75-78 79-82 83-85 86-88 89-91 92-96 97-100 101-107 108-132	COVID-19	50-60 61-67 68-70 71-74 75-78 79-83 84-86 87-90 91-94 95-99 100-105 106-127	50-60 61-66 67-71 71-74 75-77 78-80 81-82 83-87 88-90 91-95 96-102 103-127

SHEEP	2022	2021	2020	2019
FINE WOOL	110-128 129-140 141-161	COVID-19	107-130 131-140 141-165	97-125 126-135 136-169
FINE WOOL X	97-129 130-147	COVID-19	101-132 133-151 152-190	99-131 132-143 144-173
MED WOOL	90-123 124-134 135-141 142-150 151-159	COVID-19	90-122 123-132 133-141 142-150 151-163 164-199	90-123 124-133 134-142 143-150 151-158 159-195
SOUTH DOWN	90-119 120-135 136-170	COVID-19	83-117 118-130 131-163	96-120 121-130 131-166
HAIR SHEEP	75-98 99-114	COVID-19	80-102 103-115 116-146	80-105 106-118 119-145

SWINE	2022	2021	2020	2019
BLACK OPB	250 253-266 268-290	COVID-19	230-239 240-261 262-270	230-240 241-268 269-270
DUROC	250 251-270 272-287 290	COVID-19	230-253 254-269 270 270	230-255 256-269 270 270
HAMPSHIRE	250 250 253-265 266-279	COVID-19	230-242 243-259 260-269 270 270	230-244 245-256 257-269 270 270
WHITE OBP	250-259 261-276 280-290	COVID-19	230-252 253-266 267-270	230-246 247-267 268-270
CROSS	250 250 250 251-258 259-264 265-271 272-277 278-288	COVID-19	230 230231-243 244-250 251-258 259-264 265-269 270 270	230 230 231-242 243-251 252-260 261-266 267-269 270 270
YORKSHIRE	250-262 263-274 275-290	COVID-19	230-258 259-269 270	230-255 256-269 270

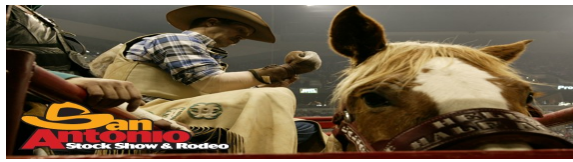


Texas
Elite Showcase
Kerrville, TX

- ARRIVAL:** Thursday, February 9, 5:00 PM—10:00 PM
Friday, February 10, 8:00 AM—10:00 PM
- CHECK-IN:** Friday, February 10th
11 PM deadline
- SHOW:** Saturday, February 11, 9:00 AM
Pedigreed, followed by Champion Pedigreed Drive, followed by
Light Crossbred Division
- Sunday, February 12, 7:00 AM
Dark Crossbred Divisions, followed by Champion Crossbred Drive,
followed by Supreme Champion Drive
- RELEASE:** All gilts must be out of the barns Sunday night, February 12th
- SALE:** Sunday, February 12th
Preview at 1:00 PM
Sale at 4:00 PM
- JUDGES:** Andy Rash, IL (Lead Judge)
Jesse Hoblyn, NE (Sift Judge)

- **CTBR ONLY** The Texas' Elite Showcase is open to only gilts of the Certified Texas Bred Registry. The gilts must have been bred, farrowed, and raised in Texas and have a valid CTBR certificate.
- All gilts entered must be validated in the Texas 4-H and FFA Swine Validation Program and must show ownership in the individuals name on or before Dec. 1st, 2022. Registration papers **MUST** be uploaded into the state validation website.
- There is no limit on the number of entries each exhibitor may enter, provided each entry meets all requirements.
- Certificate of Veterinary Inspection
 - Health papers are required on all gilts & will be inspected upon arrival.
 - All certificates must be issued on or after January 14, 2023 with the following information:
 - ⇒ Leptospirosis vaccination is required on breeding swine within 30 days prior to date of the sale with vaccine containing the following strains: Canicola, Hardjo, Icterohaemorrhagiae, Grippotyphosa & Pomona. Vaccination date must appear on the health certificate.
 - ⇒ A Statement must appear that says the animal has not been fed garbage, has not been exposed to hog cholera or pseudorabies, does not originate from a quarantined herd, nor has the herd of origin had PRV within the last 6 months, nor have the entries themselves been vaccinated for PRV.
 - ⇒ Gilt identification must be included on health certificates in the form of validation number and ear notches.
 - ⇒ **New for 2020 - Blood tested negative for Brucellosis and Pseudorabies**
- **Pedigreed Division** Purebred classes will be broken by age. Gilts must have been farrowed between June 1—September 20, 2022. Berkshire, Chester, Duroc, Hampshire, Landrace, Poland, Spot & York.
- **Non-Pedigreed (Crossbred) Division** Classes will be broken by weight following the weight card deadline. There will be a Light Crossbred breed for gilts with NO black, and a Dark Crossbred breed that will be divided into 3 divisions. Light, Medium & Heavy. Gilts must weight between 230 and 350 lbs. There will be a 10 lb. weigh-back.
- **Exhibitors of crossbred gilts will be required to complete a pedigree form at time of check-in, listing the sire and sire of dam.**
- **Sale** A minimum of 50 gilts will be eligible to sell. All gilts selected to sell must sell. NO EXCEPTIONS. All breed champions and reserve are guaranteed a sale lot. A 15% commission will be collected on each gilt in the sale to assist in marketing expenses.
- **Premium Payout**

Supreme Champion:	\$5,000 & Cimarron Aluminum Popper
Res Supreme Champion:	\$3,000 & Cimarron Aluminum Popper
Champion Purebred Overall	\$1,000
Res Purebred Overall	\$1,000
Champion Crossbred Overall	\$1,000
Res Crossbred Overall	\$1,000
Breed Champion	\$500
Res Champion	\$400
1st	\$300
2nd	\$250
3rd	\$200
4th	\$150
5th	\$100



Goats	Arrive	4:00 am Monday, February 13th
	Check In	8:00am—4:00pm Monday, February 13th
	Show	8:00am Tuesday, February 14th
Lambs	Arrive	4:00 am Monday, February 13th
	Check In	8:00am—4:00pm Monday, February 13th
	Show	8:00am Tuesday, February 14th (Southdown, FW, FWX, Dorper) 8:00am Wednesday, February 15th (Medium Wool)
Barrows		Group 1—Berkshire, Dark Cross, Duroc, Hampshire, Poland China, Spot Group 2— Chester White, Cross, Landrace, Yorkshire
	Arrive	Group 1: 12:30 am Friday, February 17th Group 2: 2:00 am Tuesday, February 21st
	Check In	Group 1: 7:00am—3:00pm Friday, February 17th Group 2: 7:00am—3:00pm Tuesday, February 21st
	Show	Group 1: 7:00am Saturday, Feb 18th (Berk, Spot, Poland China, Hamp) Group 1: 7:00am Sunday, February 19th (Duroc, Dark Cross) Group 2: 7am Wed, Feb 22nd(Chester, York, Landrace, Cross 89-100) Group 2: 7 am Thursday, Feb 23rd (Cross 101-114)
Steers	Arrive	5:00 am Monday, February 20th —Group 1
	Arrive	5:00 am Wednesday, February 22nd —Group 2
	Check In	8:00am—4:00pm Monday, February 20th —Group 1
	Check In	8:00am—4:00pm Wednesday, February 22nd —Group 2
	Show	7:30am Tuesday, February 21st - Group 1 (Maine-Anjou, Simmental, Charolais, Simbrah, Brahman, Santa Gertrudis, Brangus, ABC) 7:30am Thursday, February 23rd—Group 2 (Hereford, Limousin, Angus, Red Angus, Shorthorn, Red Cross) 7:30am Friday, February 24th (Black Cross, Other Cross)
Breeding Heifers	Arrive	5:00am Monday, February 13th (Group 1-American)
	Arrive	5:00am Thursday, February 16th (Group 2-British & Continental)
	Check In	8:00am—2:00pm Monday, February 13th (Group 1)
	Check In	8:00am—2:00pm Thursday, February 16th (Group 2)
	Show	7:00am Tuesday, February 14th
		(N: Simbrah, Red Brangus, Brangus, ARB) (S: Brahman, Beefmaster, Santa Gertrudis)
	Show 7:00am Friday, February 17th	
	(N: Hereford, Simmental, Shorthorn, Chianina, Maine-Anjou) (S: Angus, Limousin, Charolais, RAngus, ORB)	
Breeding Gilts	Arrive	12:30 am Tuesday, February 7th
	Check In	6:00am—2:00pm Tuesday, February 7th
	Show	7:00am Wednesday, February 8th (Duroc, Landrace, Hamp, Berkshire) 7:00am Thursday, Feb 9th (Spot, Chester, Poland China, York)
Junior Breeding Angora Goats	Arrive	6:00am Friday, February 10th
	Check In	8:00am—2:00pm Friday, February 10th
	Show	will follow Jr Boer show Saturday, February 11th
Junior Commercial Does	Arrive	6:00 am Firday, February 10th
	Check In	8:00am—2:00pm Friday, February 10th
	Show	8:00 am Saturday, February 11th
Junior Breeding Sheep	Arrive	6:00 am Friday, February 110th
	Check In	8:00am—2:00pm Friday, February 10th
	Show	will follow commercial ewes on Saturday, February 11th (Southdown, Suffolk, Hampshire, Rambouillet, Dorper, White Dorper)

Crossbred Gilts: Arrive 12:30 am Tuesday, February 7th
Check In 6:00am—2:00pm Wednesday, February 7th
Show 7:00am Wednesday, February 8th

Auction:

Lambs – 3:00 p.m., Thursday, February 23rd
Barrows - 2:00 p.m., Friday, February 24th
Steers – 10:00 a.m., Saturday, February 25th
Goats - 11:00 a.m., Thursday, February 23rd
Cross Gilts - 1:00 p.m., Thursday, February 9th

Contests:

Wool Judging: Saturday, February 11th
Horse Judging: Monday, February 13th
Consumer Decision Making: Saturday, February 18th
Agrobotics Challenge: Thursday, February 16th

Lambs: May enter 1 wether lamb. **No Tooth rule.** Must be shorn slick to the skin above knee and hock joints before arrival. 100 lb minimum, 175 lb maximum. 100-140 lbs. for Dorpers. There will be a 5 lb. weigh-back. No pre-set weight breaks. No outside bedding will be allowed. **254 lambs will make the sale. Terminal Show.**

Goats: May enter 1 wether goat. **No Tooth rule applies.** Horns must be blunt tipped before arrival. Must be shorn slick, with no indication of blocking, to the skin above knee and hock joints, to include the head, excluding tail switch, before arrival. Must weigh between 60 lbs. & 120 lbs. inclusive. 4 lb. weigh back at time of judging. No outside bedding will be allowed. **108 goats will make the sale. Terminal Show.**

Barrows: May enter 1 barrow. Must weigh between 250-300 lbs. All barrows penned will be re-weighed. All barrows penned for placing consideration will be re-weighed. **346 barrows will make sell. Terminal Show.**

Steers: May enter 1 per exhibitor. Must have 1/4" or less hair except on the tail switch upon arrival on the grounds. Not required to have both temporary central incisors in place. 1000 lbs. - 1500 lbs. Steers weighing less than 950 lbs. or more than 5% of the weigh-in weight will be disqualified. All placing steers must sell in the Junior Market Steer Auction. No outside bedding will be allowed. **219 Steers will make the sale.**

Breeding Goats & Sheep: Each owner may show as many as two animals in each single class. Must show ownership on or before Oct. 1st, 2022. **Angoras** (Nov. 1, 2022) No outside bedding will be allowed.

Breeding Heifers: Each owner may enter 1 heifer. "Blow & Go" show. Must show ownership on or before Nov. 1st, 2022 and **MUST** be validated in the Texas validation system. No outside bedding will be allowed.

Purebred Gilts: May enter up to 2 head. Must show ownership in the junior owner(s) name on or before Dec. 1st, 2022. Gilts may not be double entered in the Junior Gilt Show and the Junior Crossbred Gilt Show. Registration papers **MUST** be uploaded into the state validation website. **All gilts must have been farrowed between July 1st and September 15, 2022.**

Crossbred Gilts: May enter 1 cross gilt. Must weigh between 230-340 lbs. All gilts penned will be re-weighed. 15 lb. weigh-back. Between 35-50 gilts will be eligible to sell. **All gilts selected to sell must sell, no exceptions.**

Passes: Exhibitors will be issued 1 gate pass. Additional gate passes \$20.00. Vehicle passes are \$30.00

SAN ANTONIO LIVESTOCK SHOW WEIGHT BREAKS

STEER	2022	2021	2020	2019
ANGUS	1000-1205 1206-1294 1295-1500	1000-1230 1231-1354 1355-1500	1000-1160 1161-1283 1284-1500	1000-1144 1145-1261 1262-1500
BRAHMAN	1000-1191 1192-1309 1310-1500	1000-1189 1190-1289 1290-1500	1000-1199 1200-1279 1280-1500	1000-1174 1175-1279 1280-1500
CHAROLAIS	1000-1197 1198-1297 1298-1500	1000-1199 1200-1297 1298-1500	1000-1199 1200-1299 1300-1500	1000-1217 1218-1325 1326-1500
HEREFORD	1000-1211 1212-1299 1300-1500	1000-1234 1235-1296 1297-1500	1000-1189 1190-1297 1298-1500	1000-1189 1190-1298 1299-1500
LIMOUSIN	1000-1196 1197-1299 1300-1500	1000-1190 1191-1314 1315-1500	1000-1199 1200-1283 1284-1500	1000-1199 1200-1294 1295-1500
MAINE ANJOU	1000-1189 1190-1313 1314-1500	1000-1179 1180-1333 1334-1500	1000-1198 1199-1359 1360-1500	1000-1169 1170-1290 1295-1500
RED ANGUS	1000-1178 1179-1500	1000-1180 1181-1500	1000-1185 1186-1500	1000-1179 1180-1500
SANTA GERTRUDIS	1000-1218 1219-1382 1383-1500	1000-1223 1224-1299 1300-1500	1000-1245 1246-1314 1315-1500	1000-1189 1190-1294 1295-1500
SHORTHORN	1000-1219 1220-1299 1300-1500	1000-1170 1171-1335 1336-1500	1000-1151 1152-1277 1278-1500	1000-1141 1142-1259 1260-1500
SIMBRAH	1000-1191 1192-1299 1300-1500	1000-1199 1200-1309 1310-1500	1000-1220 1221-1299 1300-1500	1000-1237 1238-1320 1321-1500
SIMMENTAL	1000-1215 1216-1321 1322-1500	1000-1199 1200-1320 1321-1500	1000-1209 1210-1325 1326-1500	1000-1211 1212-1316 1317-1500
ABC	1000-1160 1161-1299 1300-1500	1000-1189 1190-1349 1350-1500	1000-1131 1132-1261 1262-1500	1000-1143 1144-1267 1268-1500
BRANGUS	1000-1268 1269-1303 1304-1500	1000-1191 1192-1294 1295-1500	1000-1196 1197-1307 1308-1500	1000-1198 1199-1291 1292-1500

	2022	2021	2020	2019
RED/BLACK CROSS 1	1000-1197 1198-1299 1300-1500	1000-1241 1242-1383 1384-1500	1000-1185 1186-1351 1352-1500	1000-1145 1146+1269 1270-1500
RED/BLACK CROSS 2	1000-1196 1197-1299 1300-1500	1000-1199 1200-1350 1351-1500	1000-1150 1151-1299 1300-1500	1000-1151 1152-1329 1330-1500
OTHER	1000-1049 1050-1135 1136-1200 1201-1290 1291-1390 1391-1500	1000-1053 1054-1112 1113-1199 1200-1289 1290-1399 1400-1500	1000-1039 1040-1100 1101-1169 1170-1239 1240-1350 1351-1500	1000-1046 1047-1114 1115-1199 1200-1259 1260-1359 1360-1500

SHEEP	2022	2021	2020	2019
FINE WOOL	100-123 124-131 132-138 139-151 152-168	100-124 125-131 132-138 139-144 145-165	100-120 121-127 128-134 135-142	100-120 121-128 129-135 136-145 146-160
FINE WOOL X	109-127 128-135 136-142 143-147 148-154 155-175	113-130 131-138 139-147 148-153 155-175	100-126 127-134 135-141 142-152 153-175	100-127 128-133 134-140 141-145 146-151 152-159 160-175
SOUTH DOWN	100-116 117-124 125-135 136-165	100-112 113-118 119-124 125-133 134-141 142-166	102-114 115-119 120-124 125-133 134-141 142-164	100-110 111-118 119-124 125-130 131-139 140-160
MED WOOL	100-118 119-125 126-131 132-135 136-139 140-142 143-145 146-148 149-151 152-154 155-157 158-160 161-164 165-168 169-174 175	100-122 123-126 127-132 133-136 137-139 140-142 146-144 145-146 147-149 150-152 153-155 156-158 159-161 162-165 166-170 171-175	101-117 118-125 126-130 131-134 135-139 140-141 142-144 145-147 148-150 151-153 154-155 156-157 158-159 160-162 163-168 169-173 174-175	100-117 118-125 126-129 130-133 134-136 137-140 141-143 144-146 147-149 150-152 153-155 156-158 159-163 164-170 171-175

GOATS (San Antonio)	2022	2021	2020	2019
	60-74	63-74	60-69	60-72
	75-79	75-79	70-75	73-77
	80-84	80-84	76-79	78-81
	85-87	85-87	80-83	82-85
	88-90	88-90	84-86	86-88
	91-93	91-93	87-89	89-90
	94-96	94-97	90-92	91-94
	97-99	98-100	93-95	95-98
	100-102	101-102	96-99	99-101
	103-106	103-106	100-103	102-104
	107-112	107-112	104-108	105-109
	113-120	113-120	109-120	110-115

SWINE	2022	2021	2020	2019
DUROC	240-243	240-243	240-243	240
	244-255	244-252	240-243	240
	256-264	253-259	244-251	241-253
	265-270	260-267	252-259	254-261
	271-276	268-274	260-265	262-269
	277-281	275-279	266-272	270-276
	282-286	280-286	273-276	277-280
	287-290	287-290	277-280	277-280
	287-290	287-290		
HAMPSHIRE	240-243	240-244	240-244	240
	240-243	240-244	240-244	240
	244-250	245-251	240-244	240
	251-258	252-257	245-250	241-249
	259-264	258-263	251-257	250-254
	265-268	264-268	258-264	255-259
	269-277	269-276	265-268	260-267
	278-288	277-286	269-279	268-276
	289-290	287-290	280	277-280

	2022		2021		2020		2019	
YORK-SHIRE	240-247 248-256 257-265 266-274 275-286 287-290		240-247 248-258 259-269 270-277 278-288 290		240 241-253 254-262 263-270 271-278 280		240 241-250 251-261 262-266 267-279 280	
LANDRACE	240-269 270-290		240-270 271-290		240-263 264-280		240-255 256-280	
BERKSHIRE	240-248 249-267 268-290		240-250 251-269 270-290		240-242 243-257 258-280		240-242 243-258 259-280	
CROSS	<u>Dark</u> 240-243 240-243 244-250 251-257 258-264 265-271 272-278 279-287 288-290	<u>Light</u> 240-243 240-243 240-243 244-249 250-254 255-257 258-261 262-264 265-266 267-269 270-274 275-277 278-282 283-289 290 290	<u>Dark</u> 240-243 240-243 244-252 253-258 259-266 267-274 275-280 281-289 290	<u>Light</u> 240-243 240-243 240-243 244-248 249-252 253-256 257-260 261-264 265-267 268-270 271-273 274-277 278-281 282-286 287-290 287-290	<u>Dark</u> 240 240 241-247 248-253 254-259 260-264 265-269 270-279 280	<u>Light</u> 240 240 240 240 241-245 246-249 250-253 254-257 258-260 261-264 265-267 268-270 271-274 275-279 280 280	<u>Dark</u> 240-243 240-243 240-243 244-249 250-256 257-264 265-270 271-279 280	<u>Light</u> 240 240 240 240 241-246 247-250 251-253 254-256 257-259 260-263 264-267 268-270 271-274 275-279 280 280
POLAND	240-257 258-290		240-264 265-290		240-249 250-280		240-250 251-280	
SPOTTED POLAND CHINA	240-241 242-252 253-261 262-275 276-290		240-243 244-255 256-264 265-278 279-290		240-246 240-246 247-258 259-264 265-280		240 241-251 252-264 265-280	
CHESTER	240-254 255-280 281-290		240-257 258-275 276-290		240-257 258-273 274-280		240-245 246-264 265-280	



Goats	Arrive	12:00noon—5:00pm Fri, Feb 3rd; 8:00am—1:00pm Sat, Feb 4th
	Check In	by 4:00pm Saturday, February 4th
	Show	8:00am Sunday, February 5th
Lambs	Arrive	12:00noon—5:00pm Fri, Feb 3rd; 8:00am—1:00pm Sat, Feb 4th
	Check In	by 4:00pm Saturday, February 4th
	Show	8:00am Sunday, February 5th (FW, FWX, Dorper)
	Show	8:00am Monday, February 6th (SD & MW)
Steers	Arrive	8:00am—2:00pm Monday, February 6th
	Check In	3:00pm Monday, February 6th
	Show	8:00am Tuesday, February 7th
Barrows		W1: Hamp, Light Cross, Dark Cross W2: Duroc, LOPB, DOPB, Berk, York
	Arrive	W1: 6:00am—3:00pm Monday, February 13th W2: 6:00am—3:00pm Wednesday, February 15th
	Check In	W1: by 4:00pm Monday, February 13th W2: by 4:00pm Monday, February 15th
	Show	W1: 8:00am Tuesday, February 14th W2: 8:00am Thursday, February 16th
Heifers:		W1: Hereford, Angus, Simmental, Brangus, Beefmaster, Santa Gertrudis, ARB) W2: Shorthorn, Charolais, Maine-Anjou, Limousin, Red Angus, ORB, Braunvieh)
	Arrive	W1: 8:00am—5:00pm Wednesday, February 8th W2: 8:00am—5:00pm Saturday, February 11th
	Check In	W1: by 6:00pm Wednesday, February 8th W2: by 6:00pm Saturday, February 11th
	Show	W1: 8:00am Thursday, February 9th W2: 8:00am Sunday, February 12th
Angoras	Arrive	8:00am—5:00pm Wednesday, February 8th
	Weigh In	Futurity 5:00pm Wednesday, February 8th
	Show	Futurity 8:00am Thursday, February 9th Junior 1:00pm Thursday, February 9th
Texas Stars Does	Arrive	12:00pm Friday, February 3rd
	Weigh In	3:00—5:00pm Friday, February 3rd
	Show	8:00am Saturday, February 4th
Youth Boer Goat	Arrive	8 am Sunday, February 5th
	Show	1 pm Monday, February 6th
STAR & Jr. Breeding Gilts	Arrive	8:00am—8:00pm Friday, Feb 10th
	Check In	9:00am Saturday, February 11th
	Show	Junior: 12:00 pm Saturday, February 11th (Berk, DOPB, Duroc, Hamp) 8:00 am Sunday, February 12th (LOPB, Spot, York)
	Show	Pedigreed: 8:00 am Sunday, February 12th
	Show	Non-Pedigreed: 12:00 pm Sunday, February 11th
Breeding Sheep		W1: Rambouillet, Delaine, Southdown, Hampshire, ORB W2: Dorper, White Dorper
	Arrive	W1: 10:00am—3:00pm Thursday, February 16th W2: 10:00am—3:00pm Saturday, February 18th
	Show	W1: 8:00am Friday, February 17th W2: 8:00am Sunday, February 19th
Ewe Lamb Futurity	Arrive	10:00am - 3:00 pm Thursday, February 16th
	Weigh In	3:00pm Thursday, February 16th
	Show	2:00pm Friday, February 17th

Auction: **Market Animals** 2:00 p.m., Saturday, April 15th
Texas Star Does 6:00 pm Saturday, February 4th
STAR Gilts 6 pm Monday, February 13th

Contests: Wool Judging Contest - 9:00 a.m., Saturday, February 18th
Consumer Decision Making Contest - 10:30 a.m., Friday, February 17th
Robotics Contest - Friday, February 3rd

Lambs: May enter 3 total with no more than 2/breed. Wethers only. **Tooth rule in place.** No more than 1st set of permanent teeth . 100 lb. min. weight, 90 lbs. for southdowns & dorpers. 170 lbs. max weight. 5 lb. weigh-back. Lambs may not be shorn after arrival on the grounds. **Places 1-4 (all classes except Dorpers) will sell in the premium sale. Places 1-2 (Dorpers) will sell in the premium sale. Places 5-10 receive a set amount. TLBA Only Show. TERMINAL SHOW.**

Goats: Limit 2/exhibitor, Must weigh between 60-120 lbs., wethers must be uniformly shorn 3/8" or less above knee & hock joint. No sharp points allowed on horns. **No tooth rule.** 4 lb. weigh- back. 10 weight classes. **New in 2023 goat exhibitors placing 5th-10th that have a Texas Goat Breeders Association Tag (TGBA), will receive \$1,000 incentive from TGBA. Places 1-4 will sell in the premium sale. Places 5-8 will receive a set amount. TERMINAL SHOW. Starting in 2024, all goats MUST have TGBA tags recorded at validation.**

Barrows: Limit 2/Exhibitor. Must weigh between 250-290 lbs. 10 lb. weigh-back. There will be no clipping of barrows arrival. **Places 1-3 will sell in the premium sale. Places 4-10 will receive a set amount. TERMINAL SHOW.**

Steers: Limit 2/Exhibitor. Minimum 1000 lbs. 5% weigh-back. Hair must not exceed 1/4". **Places 1-2 will sell in premium sale. Places 3-6 will receive a set amount.**

Heifers: Limit 3/exhibitor. All heifers must be state validated. Talk to the County Agent about Ownership dates for each breed. Ask for details on the Heifer Futurity Show.

Breeding Sheep: Limit 8/breed/exhibitor. Each exhibitor can enter 2 animals per single class & 1 group in each class. Ask County Agent for detailed tooth rules.

Jr. Ewe Lamb Futurity: Limit 1 pair/exhibitor. Health papers are not required. Ask county agent for details.

Jr. Breeding Gilt Show: No limit on entries. **ALL GILTS MUST BE TX VALIDATED.** Health papers are required at check in & must be dated on or after Jan 14, 2023. Gilts must be farrowed between June 1st & September 15th, 2022. Classes will be broken by weight with a 10 lb. weigh back.

Jr. Star Gilt Show: No limit on entries. **ALL GILTS MUST BE TX VALIDATED.** Health papers are required at check in & must be dated on or after January 14, 2023. Non-pedigreed gilts 230 lb. minimum. No Maximum. 10 lb. weigh-back. Gilts must be farrowed between June 1st & September 15th, 2022. Pedigreed classes will be broken by weight with a 10 lb. weigh back.

Angoras: Limit 12/Exhibitor. Health papers are required.

Texas Star Wether Doe Show: Limit 3/Exhibitor. 50 lb. minimum. No maximum. Health papers are not required. Scrapie tags are required. **Must be state validated.**

Junior Boer Goat Show: Limit 2 entries/class. Health papers & Scrapies tags required. **Must be state validated.**

Passes: Exhibitors issued 1 gate pass. Additional gate passes \$15.00. Vehicle passes are \$25.00

SAN ANGELO WEIGHT BREAKS

SWINE	2022	2021	2020																																										
DUROC	250-252 253-269 270-287 288-290	250-255 256-274 275-289 290	240-245 246-261 262-275 276-280																																										
CROSS	<table style="width: 100%; border-collapse: collapse;"> <tr> <td style="text-align: center; border-right: 1px solid black;"><u>Dark</u></td> <td style="text-align: center;"><u>Light</u></td> </tr> <tr> <td style="text-align: center; border-right: 1px solid black;">250</td> <td style="text-align: center;">250-258</td> </tr> <tr> <td style="text-align: center; border-right: 1px solid black;">250</td> <td style="text-align: center;">250-258</td> </tr> <tr> <td style="text-align: center; border-right: 1px solid black;">251-259</td> <td style="text-align: center;">259-274</td> </tr> <tr> <td style="text-align: center; border-right: 1px solid black;">260-268</td> <td style="text-align: center;">275-290</td> </tr> <tr> <td style="text-align: center; border-right: 1px solid black;">269-282</td> <td></td> </tr> <tr> <td style="text-align: center; border-right: 1px solid black;">283-290</td> <td></td> </tr> </table>	<u>Dark</u>	<u>Light</u>	250	250-258	250	250-258	251-259	259-274	260-268	275-290	269-282		283-290		<table style="width: 100%; border-collapse: collapse;"> <tr> <td style="text-align: center; border-right: 1px solid black;"><u>Dark</u></td> <td style="text-align: center;"><u>Light</u></td> </tr> <tr> <td style="text-align: center; border-right: 1px solid black;">250-256</td> <td style="text-align: center;">250</td> </tr> <tr> <td style="text-align: center; border-right: 1px solid black;">250-256</td> <td style="text-align: center;">251-264</td> </tr> <tr> <td style="text-align: center; border-right: 1px solid black;">257-265</td> <td style="text-align: center;">264-278</td> </tr> <tr> <td style="text-align: center; border-right: 1px solid black;">266-273</td> <td style="text-align: center;">279-290</td> </tr> <tr> <td style="text-align: center; border-right: 1px solid black;">274-287</td> <td></td> </tr> <tr> <td style="text-align: center; border-right: 1px solid black;">288-290</td> <td></td> </tr> </table>	<u>Dark</u>	<u>Light</u>	250-256	250	250-256	251-264	257-265	264-278	266-273	279-290	274-287		288-290		<table style="width: 100%; border-collapse: collapse;"> <tr> <td style="text-align: center; border-right: 1px solid black;"><u>Dark</u></td> <td style="text-align: center;"><u>Light</u></td> </tr> <tr> <td style="text-align: center; border-right: 1px solid black;">240-243</td> <td style="text-align: center;">240-256</td> </tr> <tr> <td style="text-align: center; border-right: 1px solid black;">240-243</td> <td style="text-align: center;">240-256</td> </tr> <tr> <td style="text-align: center; border-right: 1px solid black;">244-254</td> <td style="text-align: center;">257-269</td> </tr> <tr> <td style="text-align: center; border-right: 1px solid black;">255-265</td> <td style="text-align: center;">270-280</td> </tr> <tr> <td style="text-align: center; border-right: 1px solid black;">266-274</td> <td></td> </tr> <tr> <td style="text-align: center; border-right: 1px solid black;">275-280</td> <td></td> </tr> </table>	<u>Dark</u>	<u>Light</u>	240-243	240-256	240-243	240-256	244-254	257-269	255-265	270-280	266-274		275-280	
<u>Dark</u>	<u>Light</u>																																												
250	250-258																																												
250	250-258																																												
251-259	259-274																																												
260-268	275-290																																												
269-282																																													
283-290																																													
<u>Dark</u>	<u>Light</u>																																												
250-256	250																																												
250-256	251-264																																												
257-265	264-278																																												
266-273	279-290																																												
274-287																																													
288-290																																													
<u>Dark</u>	<u>Light</u>																																												
240-243	240-256																																												
240-243	240-256																																												
244-254	257-269																																												
255-265	270-280																																												
266-274																																													
275-280																																													
Light OPB	250-264 265-290	250-270 271-290	240-253 254-280																																										
YORKSHIRE	250-259 260-281 282-290	250-260 261-289 290	240-243 244-263 264-280																																										
HAMPSHIRE	250-260 250-260 261-276 277-290	250-263 250-263 264-278 279-290	240-251 252-266 267-280																																										
Berkshire	250-262 263-290	250-264 265-290																																											
DOPB	250-265 250-265 267-290	250-260 261-289 290	240-254 240-254 255-280																																										
NON-PEDIGREED GILTS																																													

STEER	2022	2021	2020
ENGLISH	1015-1162 1180-1289 1349-1499	1022-1149 1180-1269 1286-1495	1000-1139 1155-1279 1280-1442
AMERICAN	1000-1139 1149-1313 1337-1549	1051-1150 1156-1299 1300-1565	1000-1174 1175-1335 1336-1440
BLACK EUROPEAN	1020-1163 1169-1289 1330-1630	1015-1093 1124-1277 1319-1449	1000-1182 1183-1297 1298-1499
OTHER EUROPEAN	1000-1117 1122-1247 1249-1340 1345-1545	1000-1104 1119-1220 1261-1370 1379-1560	1000-1111 1112-1208 1209-1320 1321-1490

SHEEP	2022	2021	2020
FINE WOOL	100-124 125-133 134-142 143-170	100-115 116-131 132-144 145-170	100-115 116-127 128-137 138-161
FINE WOOL X	100-128 129-137 138-144 145-154 155-170	100-125 126-138 139-144 145-153 154-170	100-125 126-134 135-142 143-150 151-170
SOUTHDOWN	90-120 121-130 131-169	90-115 116-130 131-170	90-115 116-130 131-162
MEDIUM WOOL	100-133 134-143 144-152 153-162 163-170	100-125 126-143 144-151 152-161 162-170	100-125 126-137 138-147 148-155 156-170
DORPER	90-113 114-158	90-120 121-153	90-112 113-149

GOATS	2022	2021	2020
	60-74 75-81 82-86 87-90 91-94 95-98 99-102 103-107 108-113 114-120	60-71 72-78 79-84 85-88 89-92 93-96 97-100 101-105 106-111 112-120	60-71 72-77 78-82 83-87 88-90 91-94 95-99 100-103 104-111 112-120



Lambs	Arrival Check In Show	5:00pm Monday, March 6th - 10:00 am Tuesday, March 7th 1:30pm Tuesday, March 7th 8:30am Wednesday, March 8th (FW, FWX, Southdown, Dorper) 8:00am Thursday, March 9th (Medium Wool)
Goats	Arrival Check In Show	5:00am Monday, March 6th - 10:00 am Tuesday, March 7th 1:30pm Tuesday, March 7th 8:30am Wednesday, March 8th (Div. I & II) 8:00 am Thursday, March 9th (Div. III & IV)
Barrows	Wave 1: Wave 2: Arrival Check In Show A Show B Show C Show D	Hamp, Poland China, Spot, Crossbred I Yorkshire, Chester, Berk, Duroc, Crossbred II Wave 1: 5pm Friday, March 10th - 10am Saturday, March 11th Wave 2: 5pm Monday, March 13th - 10am Tuesday, March 14th Wave 1: 1:00pm Saturday, March 11th Wave 2: 1:00pm Tuesday, March 14th 8:00am Sunday, March 12th (Hampshire, Poland China, Spot) 8:00am Monday, March 13th (Crossbred I) 8am Wednesday, March 15th (Duroc, Berk, York) 8:00am Thursday, March 16th (Chester/Landrace, Crossbred II)
Steers	Arrival Check In Classify Show A Show B Arrival Check-in Classify Show C Show D	5:00pm Saturday, March 11th - 6:00 am Sunday, March 12th 11:30 am Sunday, March 12th 1:00 pm Sunday, March 12th 9:30 am Wednesday March 16th (Simmental, Maine-Anjou, Charolais, Shorthorn, ABC) 8:00am Tuesday, March 14th (Brahman Cross, Brangus, Santa Gertrudis Cross, Simbrah) 5:00 pm Tuesday, March 14th - 6:00 am Wednesday, March 15th 11:30 am Wednesday, March 15th 1:00 pm Wednesday, March 15th 9:30 am Thursday, March 16th (Limousin, Hereford, P.Hereford, Angus, R.Angus, B.Cross, R.Cross) 8:00 am Friday, March 17th (Other Cross)
Heifers	Arrival Check In Show A Show B Arrival Check In Show C Show D	5:00pm Sunday, March 5th—6:00 am Monday, March 6th 6:00 am Monday, March 6th 10:30 am Tuesday, March 6th (ARB, Brangus, Simbrah, Beefmaster, Red Brangus, Red Brahman) 8am Wednesday, March 8th (Santa Gertrudis, Grey Brahman) 5:00 pm Wednesday, March 8th - 6:00 am Thursday, March 9th 1:00 pm Thursday, March 9th 10:00 am Friday, March 10th (Hereford, Angus, P.Hereford, Red Angus, Charolais, Maine Anjou, ORB, Simmental) 8:00 am Saturday, March 11th (Shorthorn, Limousin, Chianina)

Auction:

Lambs & Goats – 12 noon Friday, March 10th

Barrows – 12 noon Friday, March 17th

Steers – 11:00 am Saturday, March 18th

Contests: Wool Judging Contest - Monday, March 13th

Range & Pasture Plant ID Contest - Saturday, March 4th

Horse Judging Contest - Monday, March 6th

Ag Robotics Contest - Wednesday, March 15th

Lambs: Exhibitor may enter 1 wether lamb. Must be slick shorn from knee and hock up at time of arriving. 100 lbs. minimum. Southdown & Dorper 90 lb. minimum. 5lb weigh-back. Exhibitors are not allowed to bring in their own shavings. Will sell 45 Fine wools, 48 Crosses, 57 Southdown, 162 medium wools & 18 Dorpers. A total of 330 lambs will sell. **Terminal Show.**

Goats: Exhibitor may enter 1 wether goat. 65 lbs. minimum, 120 lbs. maximum. 4 lb. weigh-back. Goats must be shorn slick and of uniform length, horns must be tipped (not less than the diameter of a dime at the end). No outside shavings are allowed. The top 15 goats from each class will sale. A total of 180 goats will sell. **Terminal Show.**

Barrows: Exhibitors may enter 1 barrow. Minimum Weight is 250 lbs. and 300 lbs maximum. 10 pound weigh-back. No outside shavings allowed. Will sell 48 Spotted, 80 Durocs, 24 Poland China, 40 Berkshires, 90 Hampshires, 33 Chester White & OPB, 45 Yorkshires, and 150 Crossbred I, & 154 Crossbred II. Total of 664 Hogs. **Terminal Show. To stall together, barrows must arrive together.**

Steers: Exhibitors may enter 1 steer. Minimum weight 1000 lbs. All Placing steers will be weighed before leaving the ring. 95-105% weigh back. **Hair must not exceed ¼” except for the tail switch.** Steers must be dehorned. 420 steers will sell.

Breeding Animals: Ask County Agent for specific rules.

Passes: Exhibitors will be issued 1 gate pass. Additional gate passes \$15.00.

HOUSTON LIVESTOCK SHOW WEIGHT BREAKS

STEER	2022	2021	2020	2019
ANGUS	1000-1250 1206-1292 1293-1487	1000-1176 1177-1295 1296-1605	COVID-19	1000-1185 1186-1263 1234-1460
BRAHMAN	1000-1200 1201-1300 1301-1535	1000-1190 1191-1267 1268-1479	COVID-19	1000-1167 1168-1268 1269-1395
BRANGUS	1000-1249 1250-1353 1354-1540	1000-1250 1251-1350 1351-1550	COVID-19	1000-1209 1210-1293 1294-1451
RED ANGUS	1000-1150 1151-1269 1270-1375	1000-1145 1146-1299 1300-1425	COVID-19	1000-1150 1151-1253 1254-1417
CHAROLAIS	1000-1137 1138-1214 1215-1287 1288-1346 1347-1556	1000-1153 1154-1230 1231-1303 1304-1350 1351-1560	COVID-19	1000-1155 1156-1220 1221-1260 1261-1331 1332-1525
HEREFORD	1000-1215 1216-1305 1306-1552	1000-1229 1230-1301 1302-1525	COVID-19	1000-1217 1218-1305 1306-1494
LIMOUSIN	1000-1219 1220-1299 1300-1525	1000-1229 1230-1335 1336-1490	COVID-19	1000-1212 1213-1303 1304-1440
MAINE	1000-1199 1200-1299 1300-1620	1000-1199 1200-1299 1300-1599	COVID-19	1000-1179 1180-1293 1294-1456
P HEREFORD	1001-1217 1218-1324 1325-1495	1000-1250 1251-1338 1339-1520	COVID-19	1000-1208 1209-1330 1331-1525
SANTA GERT	1000-1199 1200-1319 1320-1699	1000-1199 1200-1328 1329-1640	COVID-19	1000-1199 1200-1328 1329-1485
SHORTHORN	1005-1199 1200-1299 1300-1533	1000-1220 1221-1299 1300-1530	COVID-19	1000-1144 1145-1251 1252-1546

	2022	2021	2020	2019
SIMBRAH	1000-1208 1245-1319 1320-1560	1000-1211 1212-1318 1319-1604	COVID-19	1000-1207 1208-1303 1304-1520
SIMMENTAL	1000-1213 1214-1325 1326-1560	1000-1220 1221-1299 1300-1667	COVID-19	1000-1221 1222-1300 1301-1499
ABC	1000-1091 1092-1159 1160-1250 1251-1350 1351-2500	1000-1100 1101-1197 1198-1270 1271-1350 1351-1500	COVID-19	1000-1089 1090-1162 1163-1223 1229-1300 1301-1541
RED/BLACK CROSS I	1000-1168 1169-1260 1261-1357 1358-1600	1000-1152 1153-1249 1250-1353 1354-1599	COVID-19	
RED/BLACK CROSS II	1000-1174 1175-1299 1300-1600	1000-1220 1221-1350 1351-1547	COVID-19	
OTHER CROSS	1000-1038 1039-1100 1101-1180 1181-1256 1257-1358 1359-1595	1000-1050 1051-1125 1126-1215 1216-1279 1280-1350 1351-1580	COVID-19	1000-1048 1049-1120 1121-1185 1186-1243 1244-1339 1340-1550

GOATS	2022	2021	2020	2019
	65-74 75-78 79-82 83-85 86-89 90-91 92-94 95-97 98-101 102-105 106-111 112-120	65-70 71-76 77-81 82-85 86-88 89-91 92-94 95-97 98-100 101-104 105-110 111-120	COVID-19	65-70 71-76 77-81 82-84 85-87 88-90 91-93 94-96 97-101 102-104 105-110 111-115

LAMBS	2022	2021	2020	2019
FINE WOOL	109-130 131-140 141-172	100-132 133-143 144-172	COVID-19	106-128 129-138 139-188
FINE WOOL cross	115—141 142 –150 151—189	115-139 140-151 152-185	COVID-19	110-138 139-150 151-180
SOUTH- DOWN	100-123 124-135 136-179	97-125 126-137 138-210	COVID-19	90-121 122-134 135-171
MEDIUM WOOL	100-133 134-141 142-147 148-152 153-157 158-163 164-170 171-178 179-220	100-133 134-139 140-145 146-149 150-154 155-160 161-166 167-175 176-225	COVID-19	105-128 129-136 137-141 142-146 147-150 151-156 157-161 162-169 170-205
DORPER	90-110 111-126 127-165	90-107 108-121 122-159	COVID-19	90-109 110-121 122-165

SWINE	2022	2021	2020	2019
BERKSHIRE	250 251-260 261-272 273-290	250 251-261 262-271 272-290	COVID-19	240-240 241-255 256-268 269-280
CHESTER & WOPB	250-254 255-272 273-290	250-255 256-276 277-290	COVID-19	240-247 248-264 265-280
DUROC	250-254 255-260 261-265 266-270 271-278 279-289 290	250-252 250-252 253-257 258-264 265-270 271-277 278-286 287-290	COVID-19	240-244 240-244 245-250 251-257 258-265 266-272 273-279 280-280
SPOTTED POLAND CHINA	250-254 255-268 269-290	250 251-259 260-272 273-290	COVID-19	240-244 240-244 245-260 261-280
POLAND CHINA	250-254 255-290	250-256 257-290	COVID-19	240-248 249-280

	2022	2021	2020	2019
HAMPSHIRE	250-252 250-252 250-252 250-252 253-257 258-261 262-266 267-270 271-276 277-284 285-290	250-253 250-253 250-253 250-253 254-256 257-262 263-268 269-273 274-279 280-286 287-290	COVID-19	240-240 240-240 240-240 241-245 246-249 250-254 255-261 262-267 268-274 275-279 280-280
CROSS	250 250 250 250 250 250 250 251-254 255-258 259-261 262-264 265-267 268-269 270-272 273-275 276-279 280-285 286-290 286-290	250 250 250 250 250 250 250 251-255 256-259 260-262 263-264 265-266 267-269 270-274 275-278 279-284 285-289 290 290	COVID-19	240-244 240-244 240-244 240-244 240-244 240-244 240-244 245-249 250-254 250-254 255-256 257-260 257-260 261-264 265-268 269-273 274-276 277-280 277-280
DARK CROSS	250-251 250-251 250-251 252-256 257-261 262-267 268-274 275-286 287-290	250-252 250-252 250-252 253-257 258-264 265-270 271-276 277-289 290	COVID-19	240-243 240-243 240-243 244-249 250-257 258-264 265-271 272-279 280
YORKSHIRE	250 251-262 263-270 271-284 285-290	250 251-263 265-272 273-285 286-290	COVID-19	240-243 244-253 254-262 263-277 278-280



Goats:	Arrival Check In Show Auction	7:00am—2:00 pm Friday, March 17th 3:00pm Friday, March 17th 8:00am Saturday, March 18th 3:30 pm Saturday, March 25th
Lambs:	Arrival Check In Show Auction	7:00am—2:00 pm Friday, March 17th 3:00 pm Friday, March 17th 8:00am Saturday, March 8th (FW, FWX, SD, Dorper, MW) 2:00pm Saturday, March 25th
Barrows:	Arrival Check In Show A Show B Auction	7:00am—2:00pm Tuesday, March 21st 3:00 pm Tuesday, March 21st 8am Wed, March 22nd (Duroc, DOPB, LOPB, Hamp, York) 8am Thursday, March 23rd (Light Cross, Dark Cross) 10:15am Saturday, March 25th
Heifers:	Wave 1 Arrival Check In Show Release Wave 2 Arrival Check In Show Release	(Continental/British) 7:00am—2:00pm Sunday, March 12th 3:00pm Sunday, March 12th 8:00am Thursday, March 24th (E: Charolais, Limousin, Maine-Anjou, Simmental, ORB) (W: Angus, Hereford, Red Angus, Shorthorn) following show or by 8:00pm Monday, March 13th (American) 7:00am—2:00pm Tuesday, March 14th 3:00pm Tuesday, March 14th 8:00am Wednesday, March 15th (E:Beefmaster, Brahman, Santa Gertrudis) (W:Brangus, Red Brangus, Simbrah, ARB) following show or by 8:00pm on Wednesday, March 15th
Steers:	Arrival Check In Show Release Auction	9:00am—2:00pm Thursday, March 9th by 3:00pm Thursday, March 9th 8:00am Friday, March 10th (British, Shorthorn, Brahman, ABC, and AOB Black) 8:00am Saturday, March 11th (AOB Red and AOB Other Color) following conclusion of breed shows or by 8:00pm on Saturday, Marcy 11th 12:15pm Saturday, March 25th

Lambs: May enter 1 wether lamb. **No Tooth Rule!** 5 lbs. weigh-back for all 1st & 2nd placing animals as well as random animals. Minimum weight of 100 lbs. (except southdowns & dorpers, 90 lbs.) No Maximum. **Will have 19 set classes (3 FW, 3 FWX, 3 SD, 8 MW, 2 Dorper). Will sell 12 SD, 12 FW, 12 FWX, 48 MW, 4 DORPERS. Total of 88 lambs!!!**

Goats: Exhibitor limited to 1 wether goat. **No Tooth Rule!** Must be shorn slick to the skin above knee and hock joints, excluding the tail switch. Horns must be blunt tipped. Must weigh between 60—120 lbs. 4lb. Weigh back for all 1st, 2nd & random placing goats. Animals will be divided into 15 classes. **Top 6 in each class will sell. Total of 90 goats will sell.**

Barrows: Exhibitor limited to 1 barrow. All barrows must be Certified Texas Bred through the Texas Pork Producers Association. Barrows must weigh between 250 to 290 lbs. 10 lbs weigh back on all placing barrows. Classes will be determined after all weights have been turned in and classes may be grouped by 3lb spreads. **Top 3 in each class will sell. Total 114 barrows will sell!!!**

Steers: Exhibitor limited to 1 steer entry. **No Tooth Rule!** Steers hair may not exceed 1/4" on any part of the body excluding the tail switch. Minimum weight 1000 lbs and no maximum. Randomly chosen animals will be weighed-back at judging. Steers weighing more than 5% more or less than the weigh-in weight will be disqualified. **All placing steers MUST sell in the Junior Market Steer Auction. Approx. 100 steers will sell!!!**

Heifers: Exhibitor limited to 2 heifer entries. Health papers will be required for all animals. The following breed divisions will be offered: Angus, Beefmaster, Brahman, Brangus, Charolais, Hereford, Limousin, Maine-Anjou, Red Angus, Red Brangus, Santa Gertrudis, Shorthorn, Simbrah, Simmental, ARB & ORB. **Premiums are: Champion Division - \$1,000.00; Reserve Division - \$750.00; Breed Champion - \$500.00; Reserve Breed Champion - \$300.00; First Place - \$25.00; Second Place - \$15.00**

Passes: Exhibitors will be issued 1 gate pass. Additional gate passes \$30.00. Vehicle passes are \$30.00

RODEO AUSTIN WEIGHT BREAKS

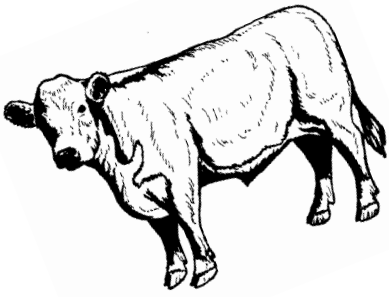
STEER	2022	2021	2020	2019
BRITISH	1137-1275 1276-1379 1391-1600	1134-1210 1211-1334 1335-1489	COVID-19	1028-1215 1219-1252 1277-1342 1361-1550
SHORTHORN	1017-1239 1240-1520	1020-1241 1242-1573	COVID-19	1101-1249 1257-1450
ABC	1025-1150 1151-1270 1271-1356 1357-1595	1025-1170 1171-1235 1236-1289 1290-1380 1381-1579	COVID-19	1045-1175 1177-1219 1227-1243 1245-1300 1309-1347 1349-1396 1397-1567
BRAHMAN	1125-1260 1261-1529	1100-1268 1269-1460	COVID-19	1052-1258 1259-1450
AOB Black	1040-1170 1171-1319 1320-1564	1055-1179 1180-1260 1261-1375 1376-1549	COVID-19	1045-1160 1172-1249 1269-1365 1366-1545
AOB Other Color	1000-1074 1075-1139 1140-1205 1206-1255 1256-1306 1307-1359 1360-1418 1419-1638	1000-1089 1090-1149 1150-1227 1228-1265 1266-1313 1314-1380 1381-1450 1451-1660	COVID-19	1000-1097 1099-1155 1157-1185 1188-1237 1239-1254 1258-1272 1275-1299 1300-1315 1319-1349 1353-1397 1399-1445 1447-1565
AOB Red	1115-1227 1228-1547	1042-1225 1226-1414	COVID-19	1003-1166 1225-1309 1360-1550

LAMBS	2022	2021	2020	2019
FINE WOOL	110-128 129-140 141-161	108-135 136-141 142-169	COVID-19	108-128 129-139 142-160
FINE WOOL X	97-128 129-147 148-216	120-142 143-153 154-183	COVID-19	114-139 142-154 155-184
SOUTH- DOWN	90-119 120-135 136-170	90-123 124-138 139-175	COVID-19	107-125 126-139 141-170
MEDIUM WOOL	90-123 124-134 135-141 142-150 151-159 160-205	107-134 135-143 144-149 150-154 155-161 162-168 169-175 176-212	COVID-19	102-133 134-142 143-147 148-153 154-157 158-162 163-172 173-208
DORPER	75-98 99-114 115-154	100-116 117-150	COVID-19	91-116 117-134

GOAT	2022	2021	2020	2019
	50-64 65-69 70-74 75-78 79-82 83-85 86-88 89-91 92-96 97-100 101-107 108-132	60-71 73-78 79-82 83-85 86-88 89-90 91-92 93-94 95-97 98-100 101-102 103-104 105-108 109-112 113-120	COVID-19	60-70 71-78 79-83 84-86 87-89 90-91 92-93 94-95 96-97 98-100 101-102 103-105 106-108 109-113 114-120

RODEO AUSTIN WEIGHT BREAKS

SWINE	2022		2021		2020	2019	
DUROC	250	251-266	250-251	252-267	COVID-19	240-249	250-262
	267-279	280-290	268-283	284-290		265-279	280
HAMP-SHIRE	250-252	250-252	250-252	250-252	COVID-19	240-242	240-242
	250-252	255-258	250-252	253-260		243-251	252-259
	259-265	266-275	261-268	269-279		260-266	267-273
	276-290	280-290	280-290			275-280	
YORK-SHIRE	250	253-265	250	251-266	COVID-19	240	247-263
	266-287	290	267-284	285-290		264-278	280
DOPB	250	254-265	250	251-265	COVID-19	240	241-256
	266-274	275-290	266-276	277-290		257-273	275-280
WOPB	250-261	262-290	250-260	261-290	COVID-19	240-262	264-280
CROSS	<u>Dark</u>	<u>Light</u>	<u>Dark</u>	<u>Light</u>	COVID-19	<u>Dark</u>	<u>Light</u>
	250	250	250	250		240-243	240
	250	250	250	250		240-243	242-252
	250	251-265	250	251-259		240-243	253-261
	250	266-269	250	260-270		244-249	262-268
	251-255	270-280	251-255	271-280		250-254	270-279
	256-259	281-290	256-260	281-290		255-260	280
	260-264		261-266			261-265	
	265-271		267-273			266-271	
	272-276		274-281			272-276	
	277-283		282-289			278-280	
284-290		290			277-280		



**Good Luck
at the
Majors!**

